



# Unlock Efficiency and Accuracy with ReACC

Fully Automated Reinsurance  
Accounting Solution



Institute  
and Faculty  
of Actuaries



# Challenges Faced by Insurance Companies in Preparing Reinsurance Accounts

**01**

**How Many Man-Days are Spent to Generate Reinsurance Accounts?**

On average, portfolios might take **5-10 man-days per month** to process reinsurance accounts, particularly if there are manual processes or if **data reconciliation between various systems** is required.

**03**

**Are Your Current Reinsurance Processes Efficient?**

While some companies may have made strides in automating parts of the process, many insurance firms still rely on **manual methods that can lead to inefficiencies** in processing, delays in data exchange, and errors in accounting.

**02**

**Are Reinsurance Accounts Always Prepared on Time?**

Timeliness in preparing reinsurance accounts is often impacted by factors such as **delays in receiving accurate data** from reinsurers, **data discrepancies**, or the need for extensive reconciliation.

**04**

**Are the Calculations Accurate or Are You Over/Under-Paying Reinsurers?**

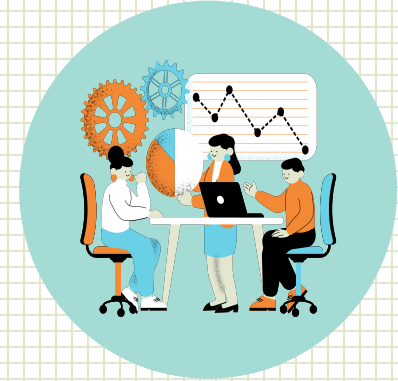
Reinsurance premium calculations are typically based on **complex formulas** and may involve assumptions about **underwriting performance, loss ratios, and the specific terms** of the treaty.



## What is ReACC?

A **fully automated** reinsurance accounting solution.

Delivers **process efficiency & financial accuracy**.

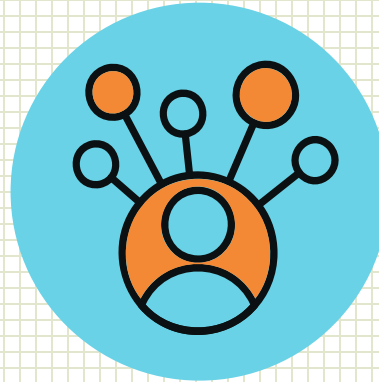


## Why ReACC? (3A)

**ACCuracy:** ReACC calculates risk exposures & produces reinsurance results & accounts accurately.

**ACCeleration:** ReACC produces automated reinsurance results & accounts instantly, accelerating your reinsurance process. Staff can be redirected to higher value tasks.

**ACCountability:** ReACC ensures accountability in the reinsurance process, providing assurance through reduced risk management & audit issues.



Clients reported that ReACC enabled them to complete tasks **6 times faster** than before.

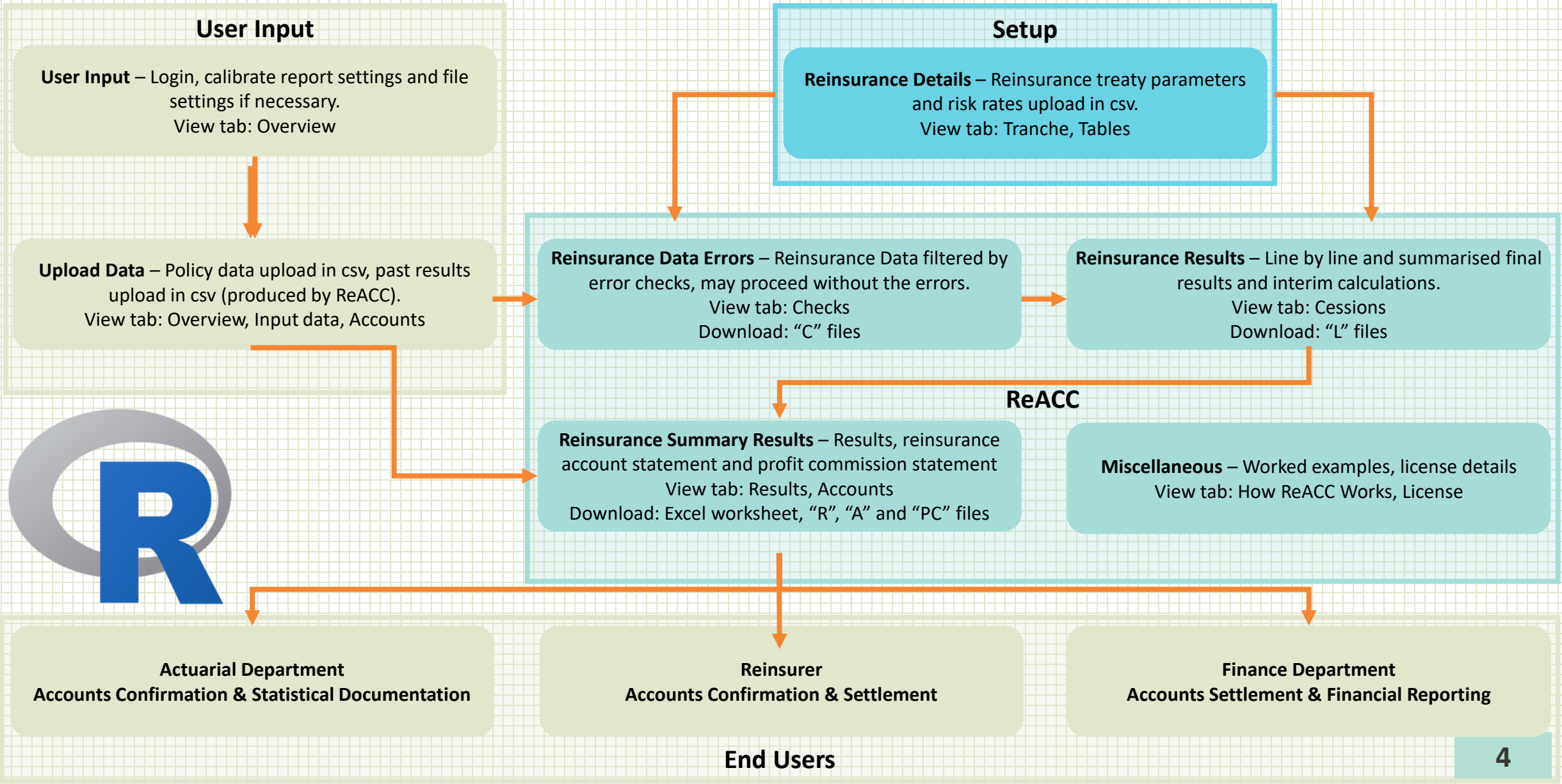
## How does ReACC help? (3S)

**Sound:** Developed using sound actuarial life contingencies methodologies, rigorously tested & documented in a user-friendly way.

**Secured:** Can be deployed on the cloud or on desktops to cater for IT security preferences.

**Supported:** Supported by a team of experts in reinsurance, actuarial, accounting & technology domains.

# How ReACC Works?



## Technical Functionality

- Per life aggregation
- Proportional sum at risk
- Non-level sum assured
- Multiple accelerated and/or additional benefits
- Tranche by underwriting period
- Policy status & changes, including reinstatement
- Underwriting loading & decisions
- Multiple levels of surplus
- Multiple reinsurers



## User Functionality

- Deployable as a cloud-based software or on-premise software.
- Delivered as a turnkey solution i.e. “cloud” solution with no coding required.
- Deployable as a cloud-based software or on-premise software
- Delivered as a turnkey solution i.e. “click-only” solution with no coding required
- Automatic data error detection and removal
- Automatic data validation
- Automatic full-set report generation
- Audit trail with username and timestamp in reports generated
- Manual adjustments to the results where necessary
- Comprehensive worked examples to illustrate calculations to the user
- User support with quick turnaround



Actomate helped **multinational companies** across **Malaysia and Cambodia** to improve their reinsurance processes through ReACC.

## About Actomate

A c t o m a t e

Actomate is a leading actuarial firm in Asia since 2015. It is a brand name that represents a group of companies comprising of Nicholas Actuarial Solutions Sdn Bhd, Two Actuarial Solutions Pte Ltd, PT Tiga Solusi Pilihan and Cambodian Actuarial Solutions Co., Ltd.

### Request a Demo Now!

See how ReACC can make a difference in your reinsurance accounting operations!

### Contact Us

Debbie Ooi

Analytics Lead

T: +6012 333 6118

E: [ReAcc@actomate.ai](mailto:ReAcc@actomate.ai)

W: <https://www.actomate.ai/reacc>

